

IFLA Asia-Pacific LA Awards 2023
Award Categories – Built Culture and Urban Landscape

PROJECT BINDER

**“Hundred-year-old Commercial Street ,
Reborn Bay-side”**

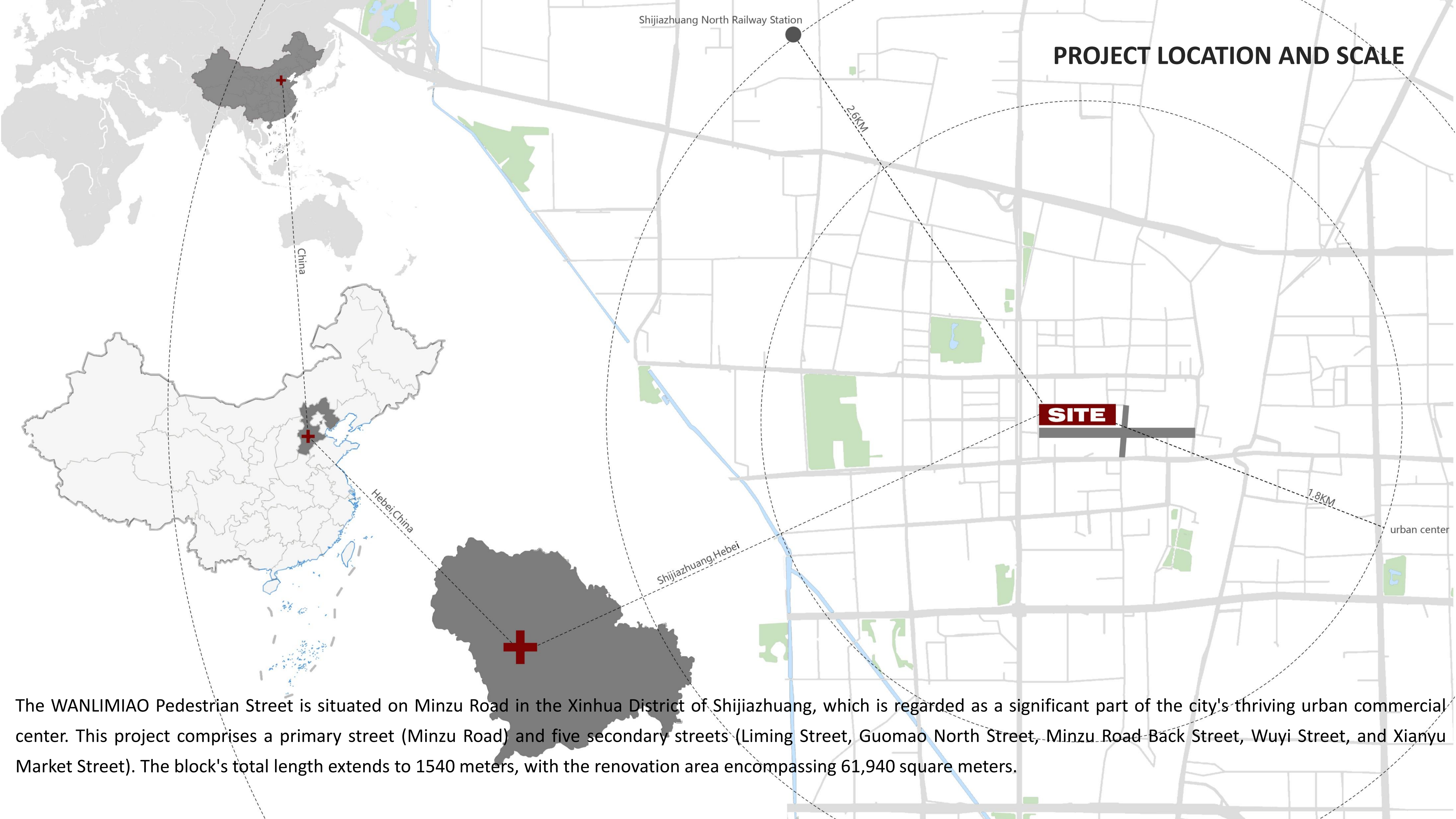
As Urban Renewal Reaches WANLIMIAO Pedestrian Street in Shijiazhuang
SHIJIAZHUANG, CHINA

Project Name : "Hundred-year-old Commercial Street ,Reborn Bay-side “
As Urban Renewal Reaches WANLIMIAO Pedestrian Street in Shijiazhuang
Project Address : Minzu Road in the Xinhua District of Shijiazhuang
City & Country : SHIJIAZHUANG,CHINA
Area(sq.m) : 61940 sq.m
Year of Completion : 2022
Award category : Built Culture and Urban Landscape

PROJECT STATEMENT

As China's urban development has shifted from an era of incremental growth to a time of consolidating existing resources, numbers of urban issues have emerged, including single-function commercial districts, environmental concerns, and loss of regional cultural heritage. WANLIMIAO Pedestrian Street, the historical and cultural origin of Shijiazhuang's commerce, began its comprehensive "urban renewal" transformation project aimed at revitalizing and upgrading the district. The project utilized an approach that prioritizes industrial planning and flexible construction principles to achieve a comprehensive revival of the hundred-year-old commercial district's cultural heritage, spatial layout, and business operations. It aimed to achieve the sustainable development of the district while ensuring that economic, social and environmental benefits were coordinated and integrated. The project incorporated the sponge city concept to enhance the district's resilience to environmental changes, and employed a prefabricated green and energy-efficient building approach to construct a low-carbon commercial block, aligning with the national "dual carbon" strategy. The district's design integrated a blank space method, allowing users to participate in the planning process and enabling the ecological, business, morphological, dynamic, and cultural aspects of the district to grow organically within the framework of the plan, resulting in diverse clusters of business functions and cultural exhibitions.





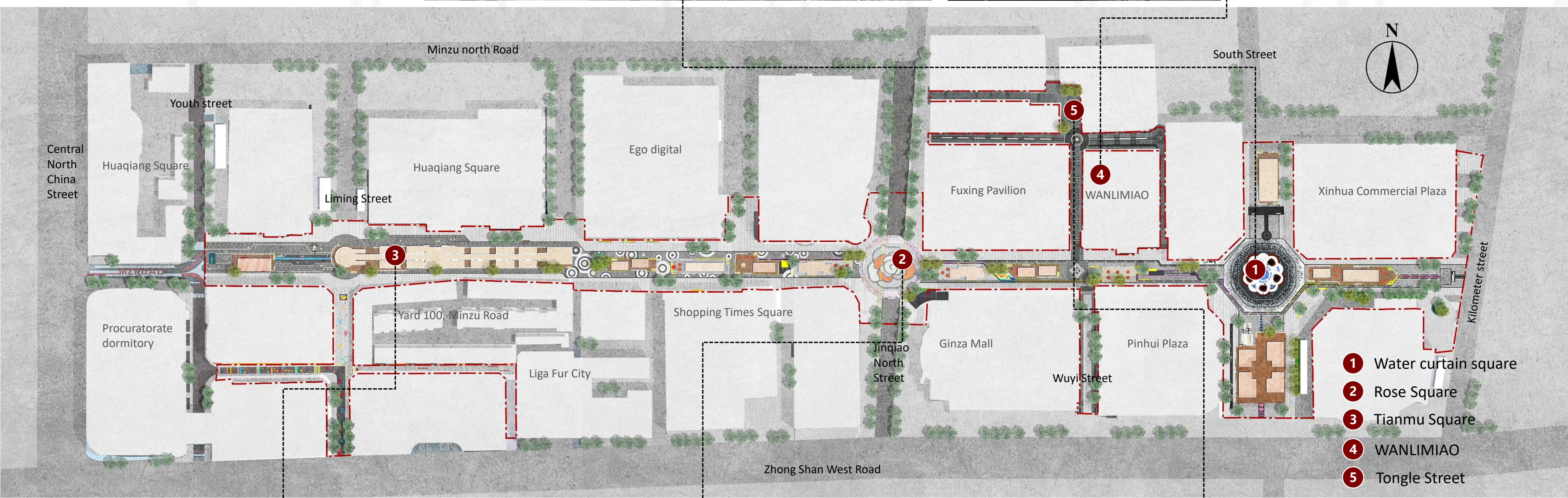
PROJECT LOCATION AND SCALE

The WANLIMIAO Pedestrian Street is situated on Minzu Road in the Xinhua District of Shijiazhuang, which is regarded as a significant part of the city's thriving urban commercial center. This project comprises a primary street (Minzu Road) and five secondary streets (Liming Street, Guomao North Street, Minzu Road Back Street, Wuyi Street, and Xianyu Market Street). The block's total length extends to 1540 meters, with the renovation area encompassing 61,940 square meters.

COMPARISON BEFORE AND AFTER TRANSFORMATION OF IMPORTANT NODES

The WANLIMIAO Pedestrian Street is built around the landscape structure of "one axis, three sections, and two areas", with Tianmu Square, Rose Square, and Water Curtain Square as important nodes.

Site plan

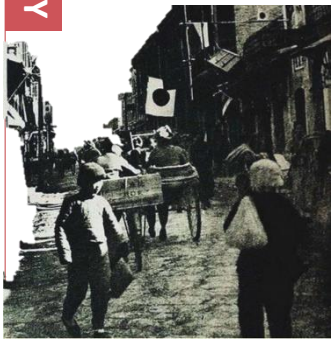


PROJECT BACKGROUND AND CURRENT SITUATION

The origin of WANLIMIAO Pedestrian Street can be traced back to the beginning of the last century. In the late Qing Dynasty, Shijiazhuang began to rise with modern industry and commerce. Urban commercial activities began to gather and develop with the temple fairs, and WANLIMIAO became the origin of Shijiazhuang's commercial and cultural activities. The street blocks, such as Tongle Street (now WANLIMIAO Pedestrian Street), which originated in 1912, witnessed the century-long development of Shijiazhuang.

QING DYNASTY

Qing Kangxi twenty-seven years Shijiazhuang village belongs to Zhen Dingfu Lu county.



1903

In 1903, the Beijing-Han Railway station was set up east of Shijiazhuang Village. In 1903, Shijiazhuang became the junction of Luhan (Beijing-Han) Railway and Zhengtai Railway, and modern industry and commercial service industry emerged and developed accordingly.

REPUBLIC OF CHINA

After 1912, a prosperous commercial block centered on Bridge Street was formed near Dashiqiao Bridge, including Bridge Street, South Street, Shengping Street (Wuyi Street), Tongle Street and Muchang Street. Tongle Street was the present Minzu Road. These streets were the earliest business zones in Shijiazhuang.



20C80

In the early 1980s, all kinds of daily commodity vendors began to gather around the old railway station, near Dashi Bridge and Bridge Road, and gradually developed into open-air trading markets. Xinhua Trade Center took shape. In 1987, Xinhua Trade Center was officially opened.



2017

In 2017, Minzu Road commercial Pedestrian Street was upgraded and officially established the goal of building a pedestrian street. With a total length of 1,060 meters, it has become a commercial pedestrian street integrating shopping, culture, leisure, catering and other functions.



21C

Minzu Road Pedestrian Street was initially built in 2002, forming the prototype of the pedestrian street. Around Minzu Road, there are 18 sub-markets of Xinhua Trade Center, which is praised as "the largest clothing distribution center in China" and "the largest electronic trading market in North China".

PROJECT BACKGROUND AND CURRENT SITUATION



Single-function commercial block

The block mainly relies on department stores, traditional retail services, and catering consumption, with a lack of cultural and leisure services and tourism experiences. The single function structure of the block has a negative impact on its sustainable development.

The environmental issues are pronounced

The supporting facilities in the street block are outdated, which leads to insufficient resilience to natural disasters such as strong winds and heavy rain. The traffic organization is disorderly, and noise pollution is relatively severe. Environmental issues such as solid waste disposal are also prominent in the area.

Loss of regional cultural context

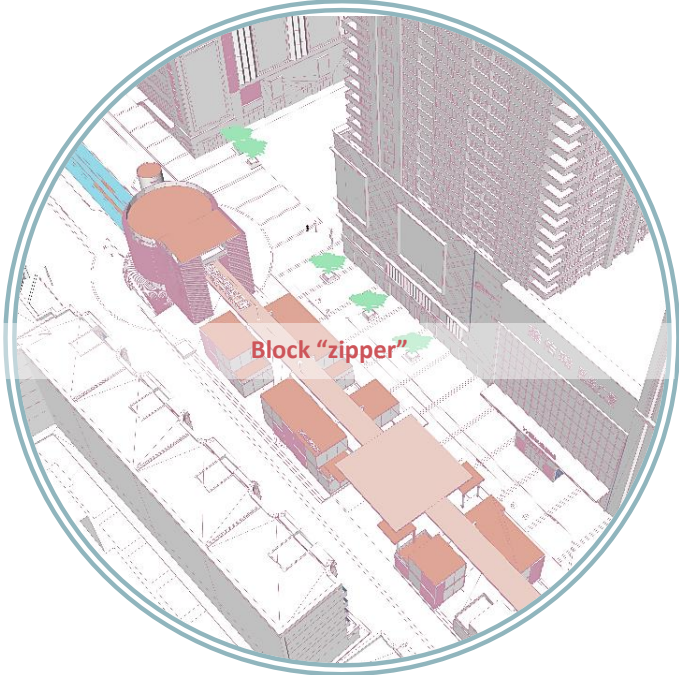
The street block has witnessed the glorious development of Shijiazhuang over the past century. As an important carrier of urban memory, it has not fully explored and displayed the historical context of the region.



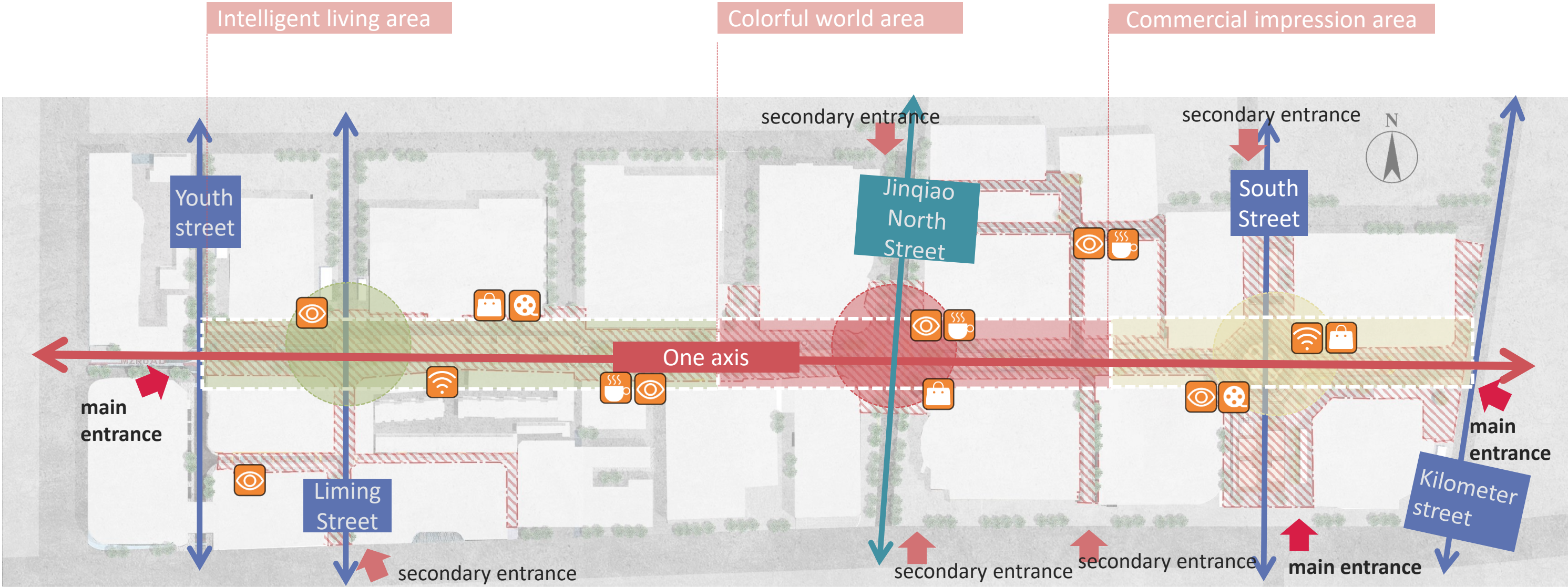
PROJECT BACKGROUND

As China's urban development enters a period of consolidation from one of expansion, numerous urban issues that arose during the rapid growth phase of cities have come to the fore. Commercial streets are also confronted with challenges such as single-function blocks, prominent environmental issues, and the loss of regional cultural context. Urban renewal has become a critical path and "zeitgeist" of new urbanization. In July 2021, the WANLIMIAO Pedestrian Street commenced a comprehensive "urban renewal" transformation and upgrading project.

INTEGRATED STRATEGY

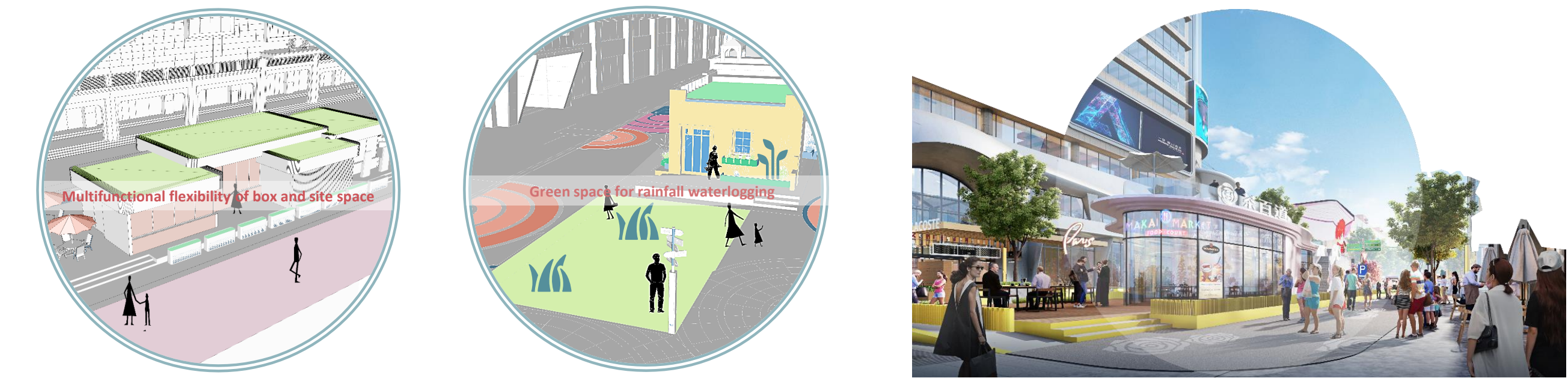


De-emphasizing the "people-oriented" concept, emphasizing the harmonious coexistence of people and the ecological system of plants, animals, and natural environment in the neighborhood; using the concept of 'holistic approach', the neighborhood's industries, functions and themes are strategically located and planned. Along the 1080-meter main street, 32 'commercial boxes' are arranged to form a 'zipper' pattern for the neighborhood. The 'box zipper' pattern can reorganize the spatial layout of the neighborhood by combining different historical periods and different textures of the streetscape, creating a spatial sequence with a sense of territory. The commercial boxes with diverse forms and functions can stitch together the neighborhood space and improve the scale and proportion of the streetscape, providing various social spaces for communication and interaction. Moreover, the 'zipper' boxes can form a wind corridor with the surrounding buildings to adjust the microclimate of the neighborhood, and enhance the ecological space and functional connection of the neighborhood.



LANDSCAPE STRUCTURE--"ONE AXIS, THREE SECTIONS, AND TWO AREAS"

"FLEXIBILIZATION" STRATEGY



The "commercial boxes" and some nodal spaces in the block are designed with the concept of "blank space", which allows users to become designers and enables the ecological, industrial, morphological, dynamic, and cultural aspects of the block to grow freely within the planning framework, thus achieving the sustainable development of the block. With the concept of a sponge city, the block's resilience to natural disasters caused by environmental changes is enhanced.

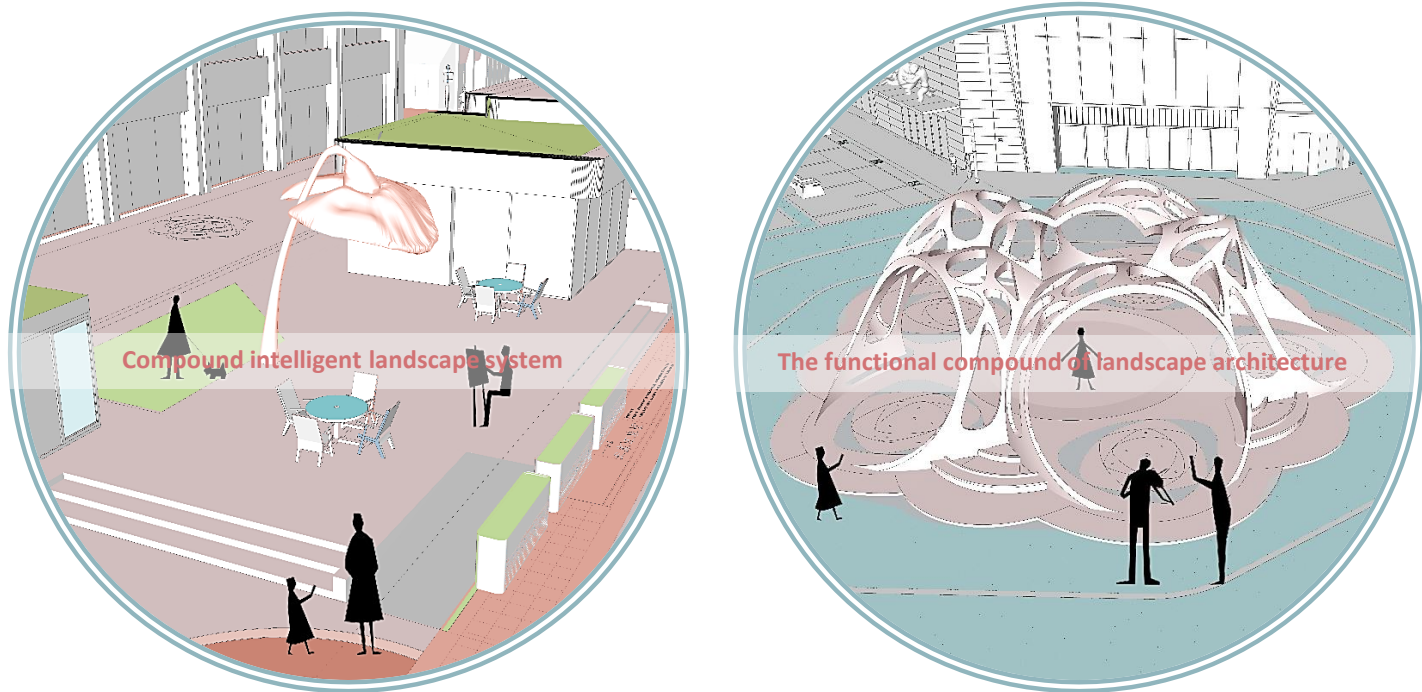


▲ Node space design white space to achieve sustainable development of the block

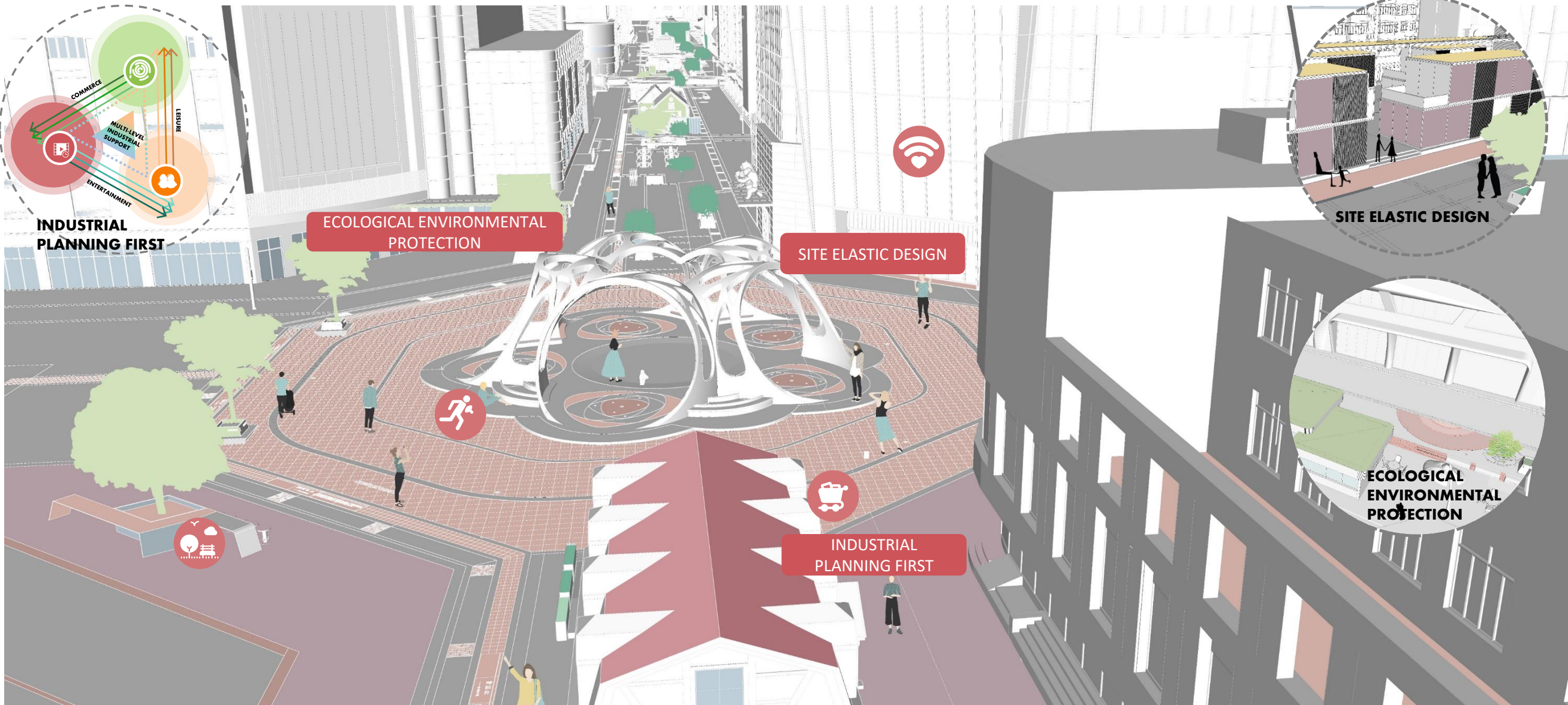


▲ The concept of "sponge city" promotes block resilience

COMPOSITE STRATEGY



Integrating landscape space with the environment, ecology, culture, commerce, exhibition, leisure, entertainment, and wisdom functions of the block, combined with the typical context of the street and the positioning of the block theme, building a new block landscape system, and fully utilizing low-carbon and energy-saving technologies to maintain the harmony between social development and the natural environment.



CULTURAL AND CREATIVE NEIGHBORHOOD



▲ WANLIMIAO children's clothing market



Characteristic cultural paving

Cultural paving

Historical relics: Cang Rock Shrine monument



▲ WANLIMIAO children's clothing market



▲ Tongle Street



SMART NEIGHBORHOOD



Flowers bloom and fade



The same aromatic film machine



Sound experience warehouse



Heartbeat blind box



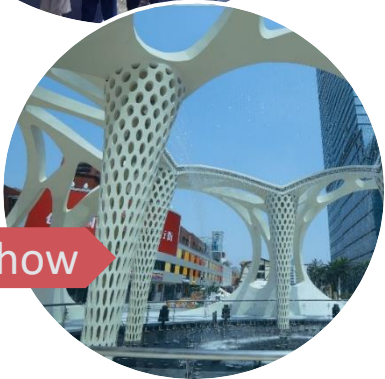
▲ Electronic fireworks show



Detail of the Water Curtain music show



AR/VR technology



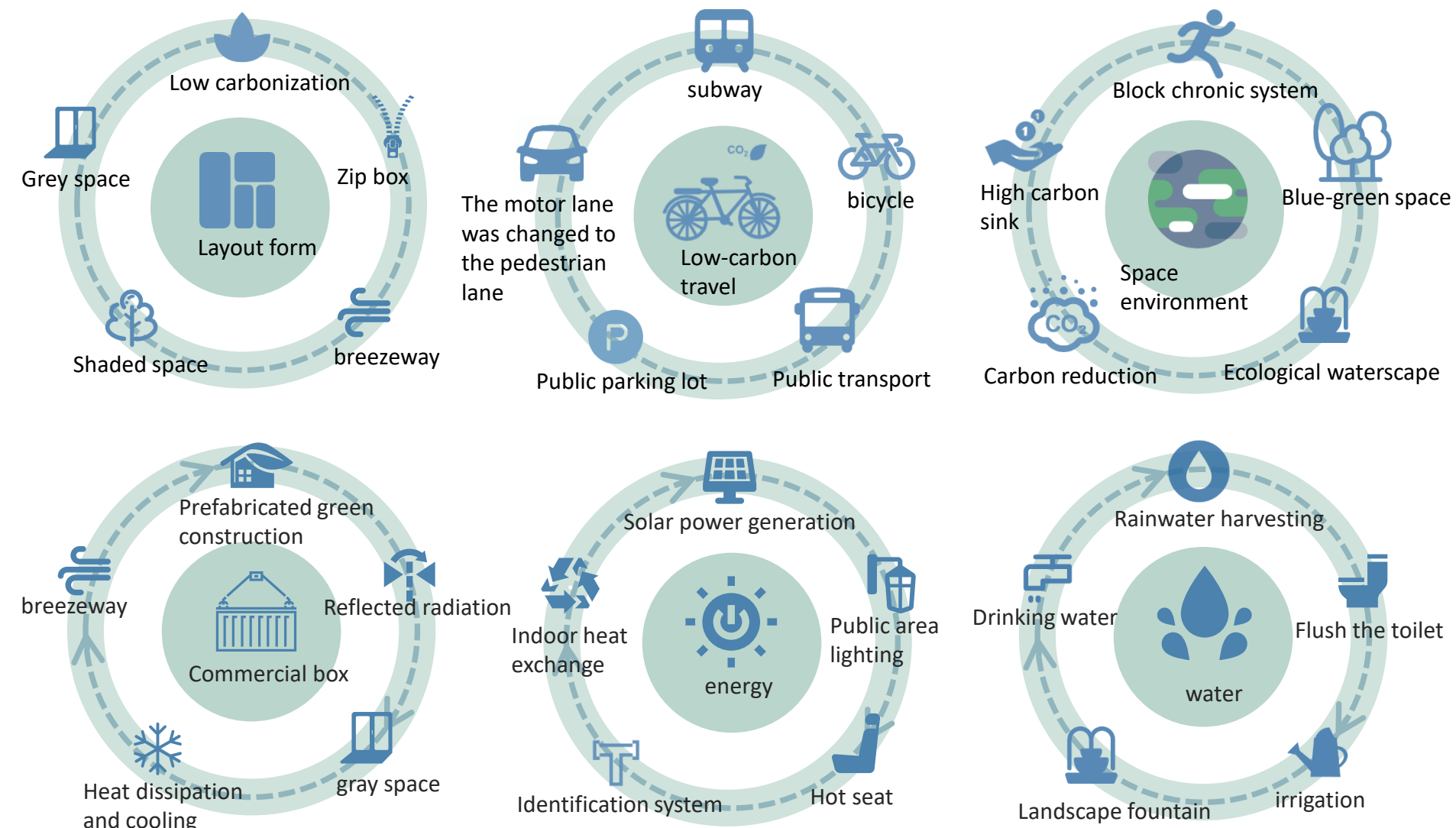
▲ Water curtain music show



LOW-CARBON NEIGHBORHOOD

In response to the 'dual carbon' strategy, the low-carbon neighborhood is created by utilizing systematic decarbonization planning, which features adjustable energy use, recyclable resources, and walkable transportation. Based on the dimension of carbon emissions in the neighborhood, the design focuses on decarbonization technologies such as energy utilization, building construction, layout form, low-carbon transportation, spatial environment, and municipal infrastructure.

Building-integrated photovoltaic technology is used in the renovation of block buildings, lighting systems, sign systems, and urban furniture to improve the utilization rate of renewable energy. Green building, prefabricated construction, ultra-low energy consumption building, and other technologies are promoted in the block. Referring to the mature commercial scale of domestic blocks, 32 integrated commercial facilities with different styles, unique customization, and special design are arranged in a modular, green, and energy-efficient way, providing a foundation for subsequent block business upgrades and brand introduction.



▲ Carbon neutral strategy



Solar labeling system

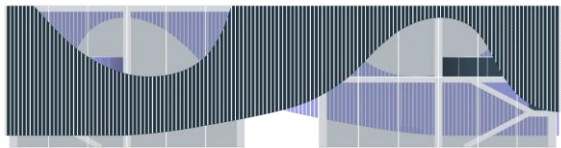


Solar heated seat

▲ Low carbon commercial box

LOW-CARBON NEIGHBORHOOD

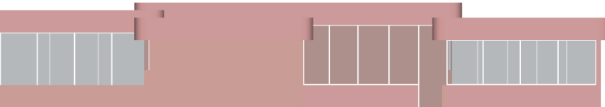
At the same time, passive cooling and heat dissipation devices are used in the boxes instead of air conditioning and other equipment. The top can reflect and absorb solar radiation, weaken the surface solar radiation intensity, and reduce the urban heat island effect. The building adopts a low-carbon layout, and the zipper-like boxes and the tall commercial buildings on both sides of the main street form a corridor, which is conducive to natural ventilation and improves the comfort of the street environment. Meanwhile, modular boxes combine to form variable building spaces, providing pedestrians with interwoven and changing gray spaces and shade spaces, making up for the lack of shading conditions in commercial blocks.



elevation

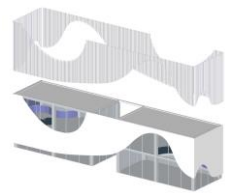


elevation



elevation

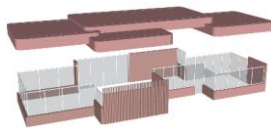
▲ Commercial box analysis



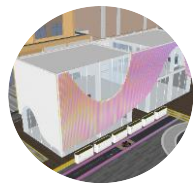
Explosion analysis diagram



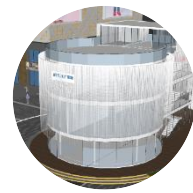
Explosion analysis diagram



Explosion analysis diagram



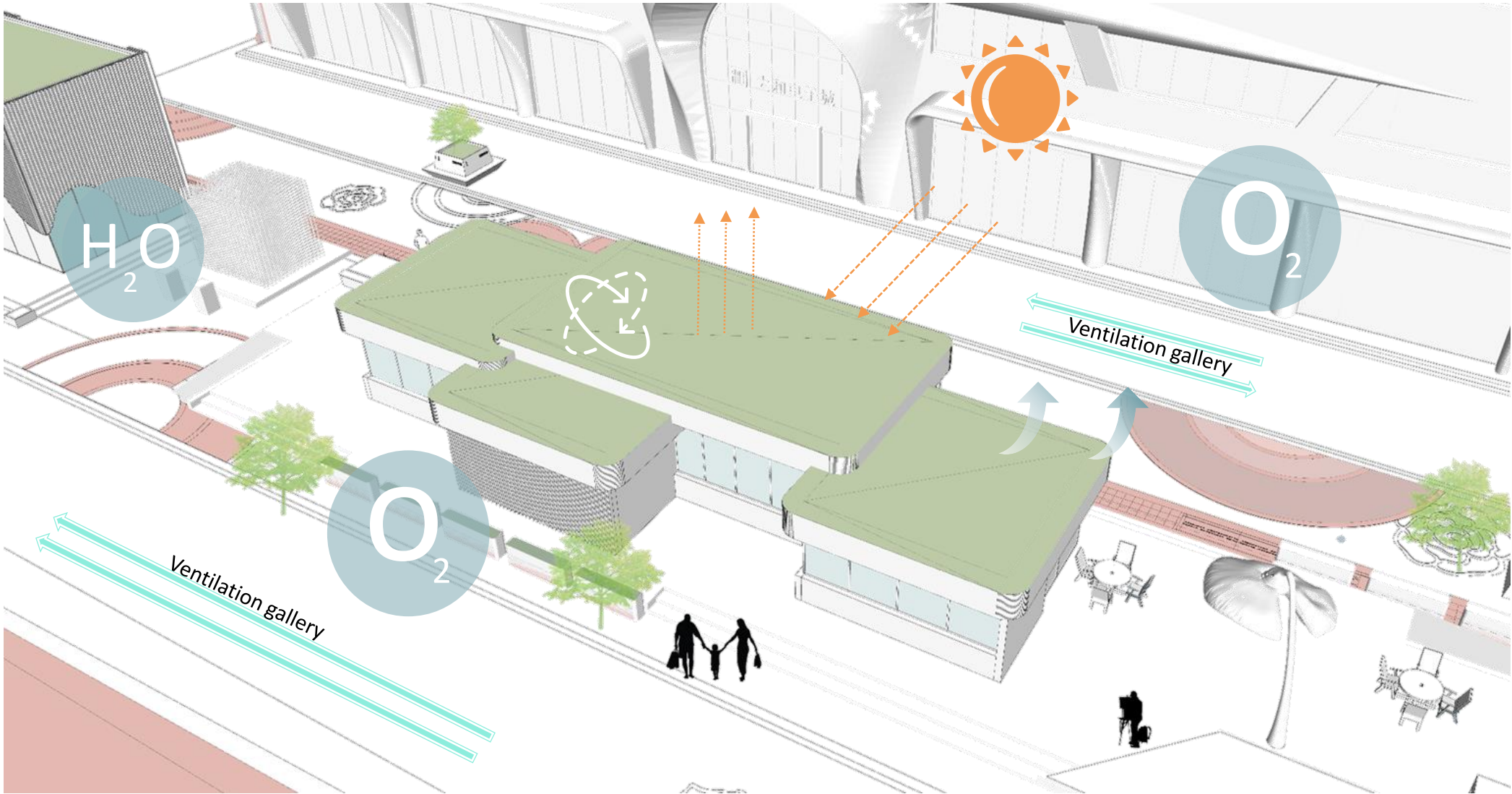
aerial view



aerial view



aerial view



▲ Analysis of low carbon concept of commercial box



▲ Low carbon commercial box



LOW-CARBON NEIGHBORHOOD

The concept of low-carbon travel is advocated in the block renovation, and the facilities around the block, such as subways, buses, and public parking lots, are utilized in a coordinated manner. A part of the original motor vehicle lane in the block is transformed into a pedestrian lane, creating a comfortable, convenient, and low-carbon block slow travel system. Reasonable layout of blue and green spaces in the block, attaching importance to the "ecological waterscape" and "greening rate" of the block, creating a public space environment with a high carbon sink.



▲ Traffic planning analysis diagram

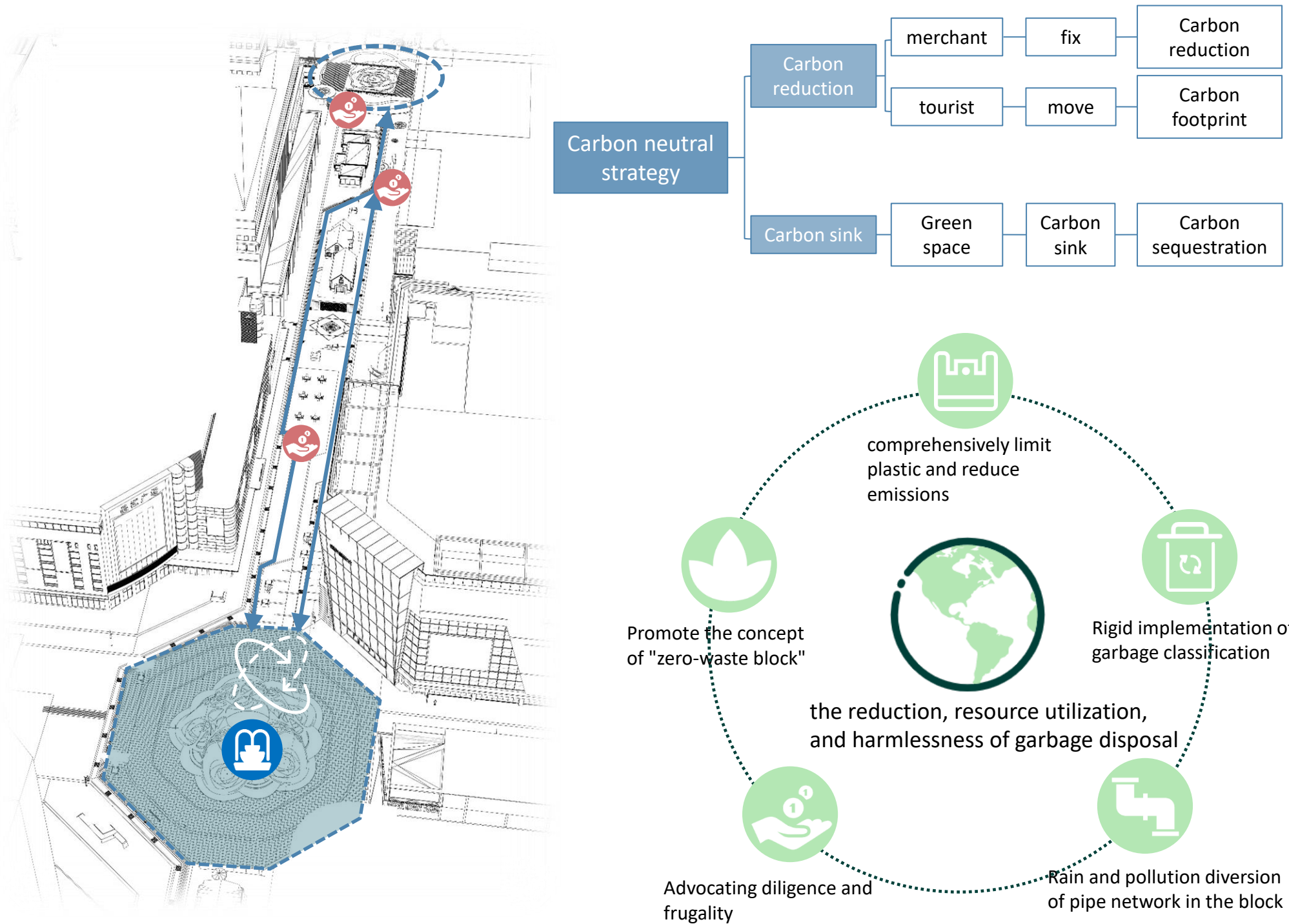


▲ Low carbon neighborhood

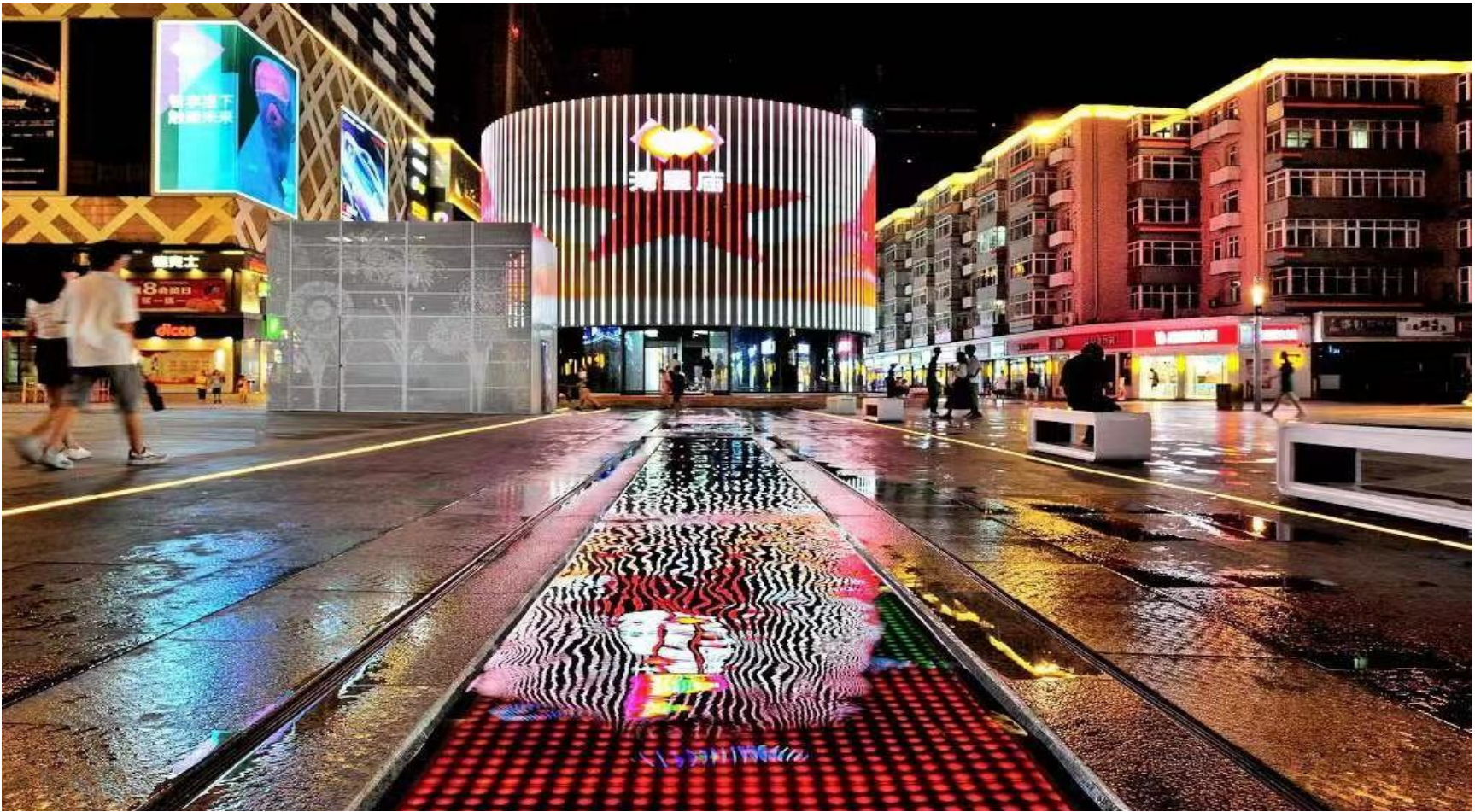
LOW-CARBON NEIGHBORHOOD

A green and resilient municipal infrastructure is built in the block, combining rainwater collection systems and water features to layout efficient and reasonable water circulation facilities, enhancing the block's storage and regulation capabilities. The resource utilization efficiency of block waste is improved, realizing the reduction, resource utilization, and harmlessness of garbage disposal, and creating a zero-waste block.

The concept of a low-carbon block has effectively changed the serious environmental pollution, disorderly traffic organization, single functional format, and boring recreational experience of old blocks, helping a century-old block to transform into a modern commercial block.



▲ Block water cycle process



▲ Block water cycle



▲ Low carbon neighborhood

Collaboration with Clients and Other Designers



▲ Great passenger flow



The WANLIMIAO Pedestrian Street project breaks away from the traditional model of "urban renewal" and adopts the "EPC+O" model, in which the design and construction of the general contracting unit and the commercial operation organization are coordinated and linked to fully responsible for the survey, design, construction, construction, and later operation management of the block transformation.

WANLIMIAO Pedestrian Street was awarded the title of "Top 10 Featured Business Districts in Shijiazhuang" . WANLIMIAO Pedestrian Street appeared on the special program "Chinese Romantic Night" on CCTV News Channel for the first time, showcasing to audiences both domestically and abroad. According to data from the smart brain of the pedestrian street, the daily foot traffic is now around 150,000 people, and during holidays and peak periods, it can reach up to 300,000 people.



▲ The special program "Chinese Romantic Night" on CCTV News Channel